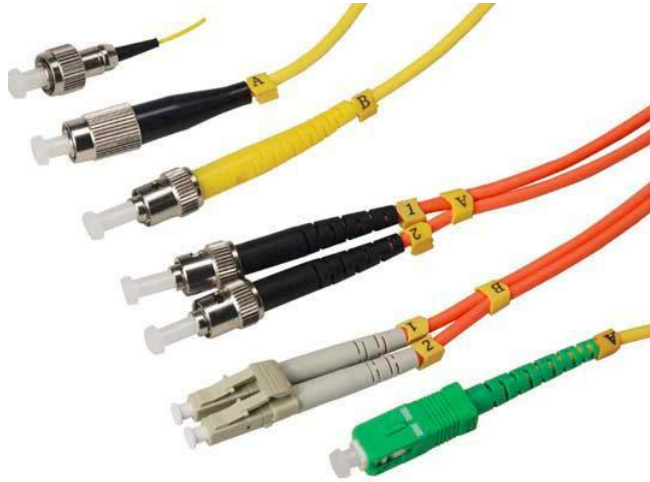


Fiber Optic Patch Cord –G.652D

LC/SC/UPC/APC – LC/SC/UPC/APC, duplex



Applications

- Optical networks (FTTx, PON, CATV)
- Data Centers
- Equipment distribution areas
- Equipment test areas
- Cross-connect applications
- Transmission systems
- Storage systems
- Switching Systems
- DWDM systems

Features

Compatible with industry standard, Telcordia's GR-326-Core, IEC
Standard RoHS Standard

High reliability and stability in various environments

100% polished and performance testing

High-quality of repeatability and matching suitability, Support more than 1000
times insertion

Specifications

Characteristics		Value/Performance
Fiber type		ITU G.652D, duplex
Cable type		Single mode OS2, 9/125μm
Jacket type		LSZH/PVC 2.0mm or customized
Jacket color		Yellow color
Label jacket		Customized
IL (Insertion Loss)		≤0.3 dB (according to IEC 61300-3-3 standard)
RL (Return Loss)		UPC≥55dB; APC≥65dB (according to IEC 61300-3-6 standard)
Interchangeability		≤0.2dB
Repeatability		≤0.1dB (1000 times)
Vibration		≤0.1dB (550HZ, 1.5mm)
Operating temperature		-40~85℃, Deviation≤0.2dB
Wavelength		1310nm, 1550nm
Operating Tensile strength		≥100 N
Installation Tensile strength		≥200 N
Impact strength of 0.74Nm/ radius 25mm of hammer		≥ 20 times
Compressive strength (long time)		≥100 N/cm
Compressive strength (short time)		≥100 N/cm
Minimum bending during installing	radius	≤ 60mm
Minimum bending installation	after	≤ 30mm

Ordering Information

Model	Description
US-LC/SC/UPC/APC- LC/SC/UPC/APC-DX-Lm	LC/SC/UPC/APC – LC/SC/UPC,/APC duplex L meter